

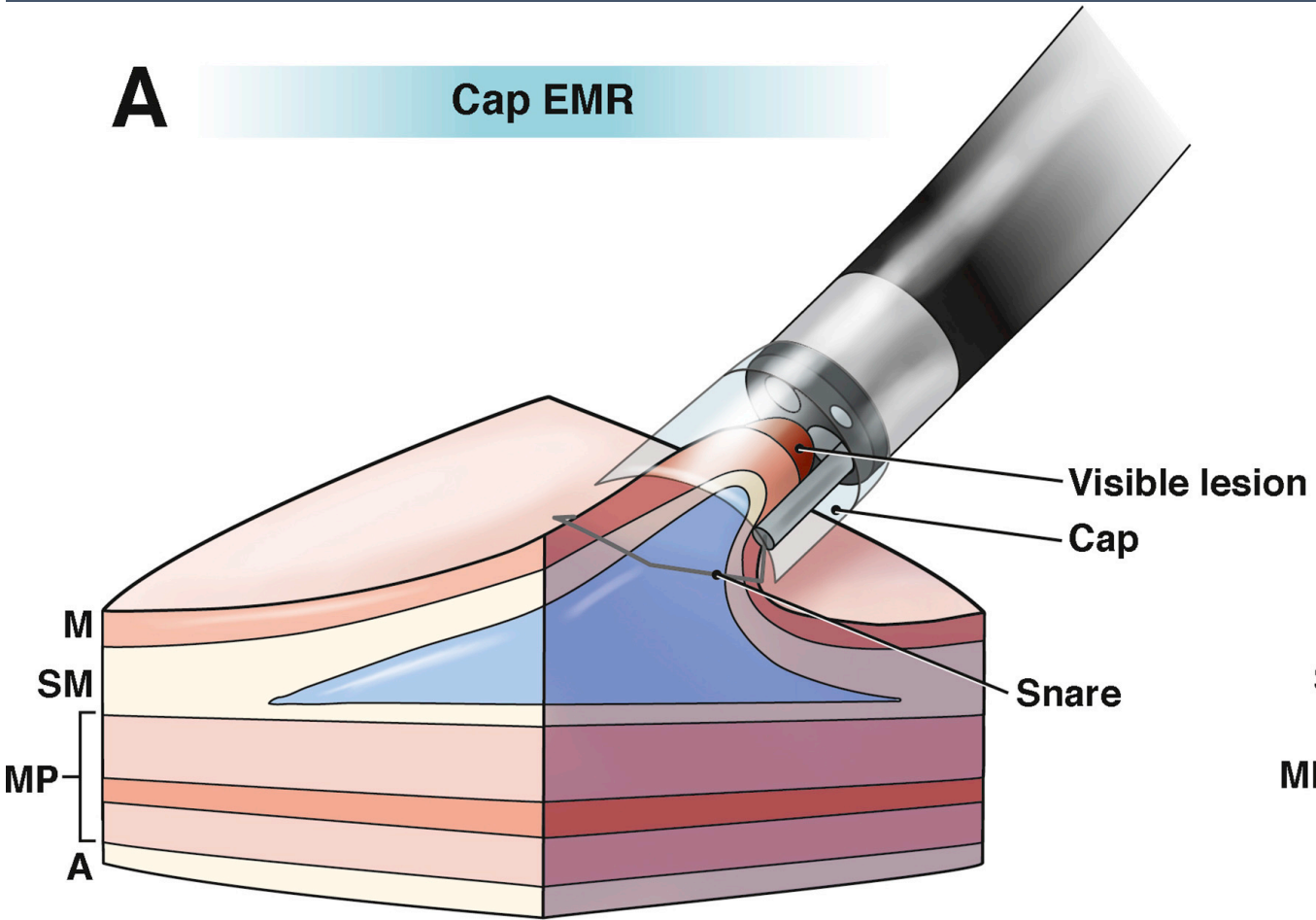
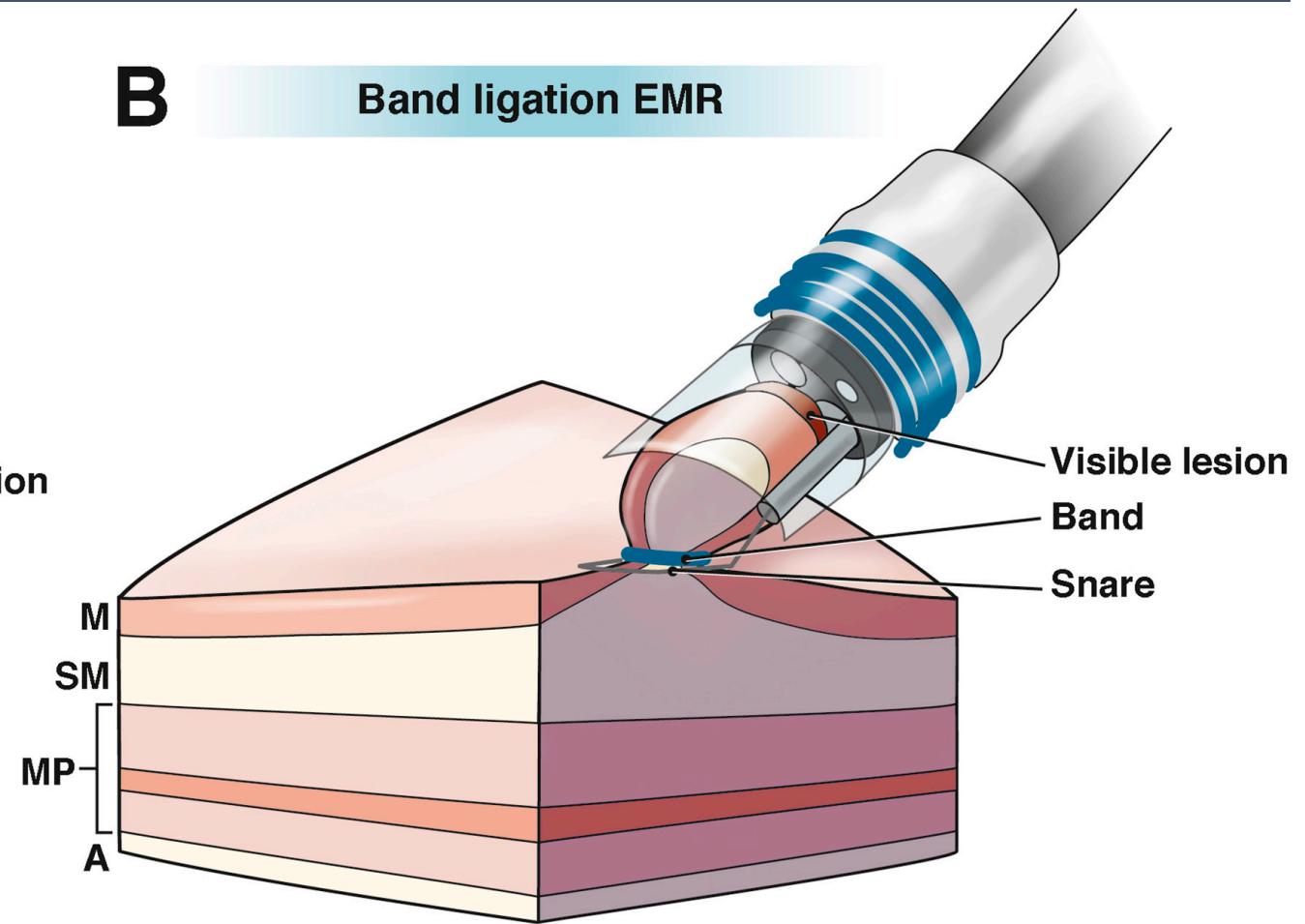
Minimally Invasive and Novel Therapeutics (M.I.N.T.) in Foregut Disease  
September 29th -October 1st 2022

# Endoscopic Mucosal Resection for Dysplastic Barrett's Esophagus

Kumar Krishnan MD

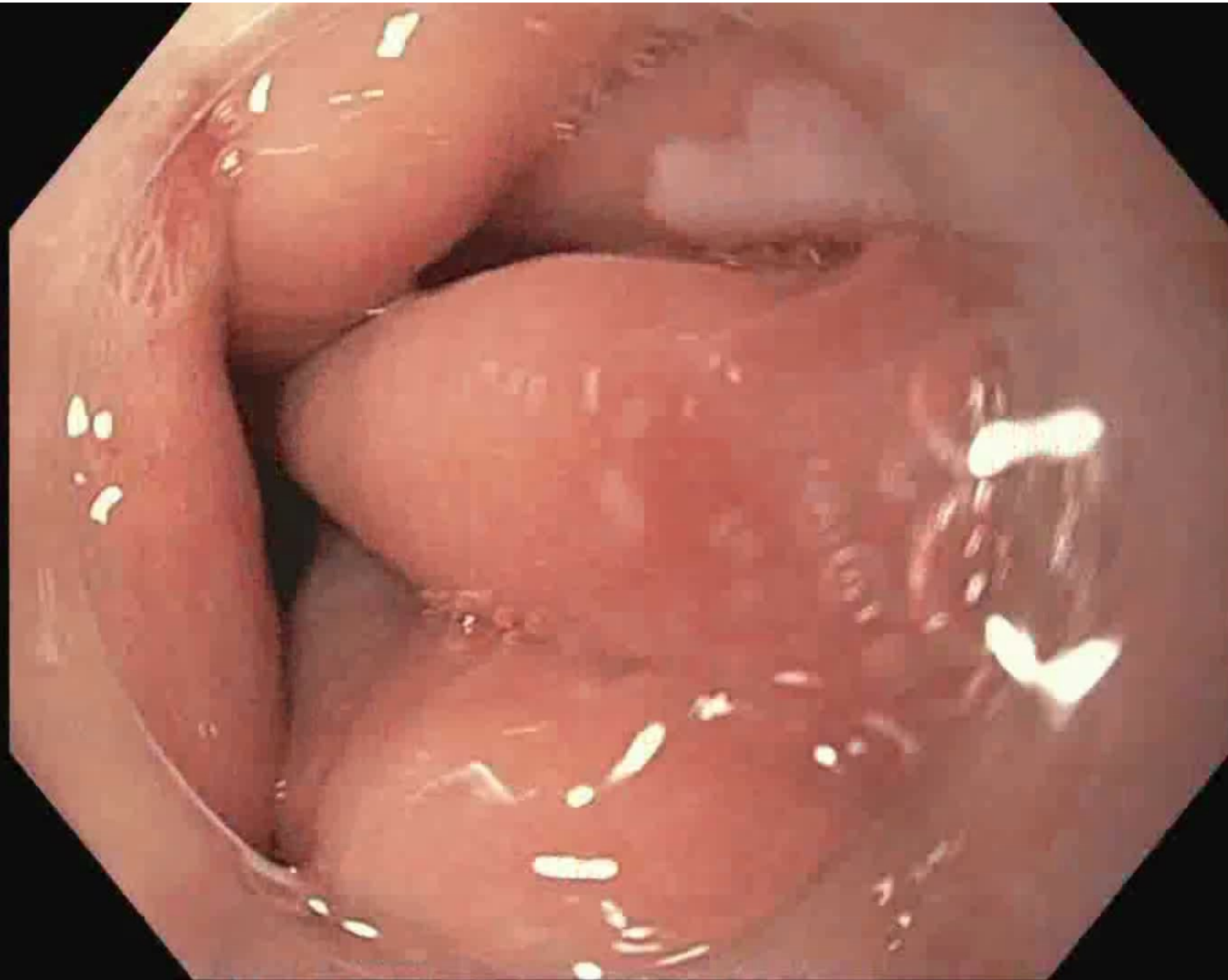
Massachusetts General Hospital



**A****Cap EMR****B****Band ligation EMR**

**HARVARD**  
MEDICAL SCHOOL





Scope:

GIF HQ-190

- Near focus

- NBI

Distal attachment Cap

BSC captivator EMR kit

Retrieval net

ERBE Vio3

Endocut Q

Effect 2

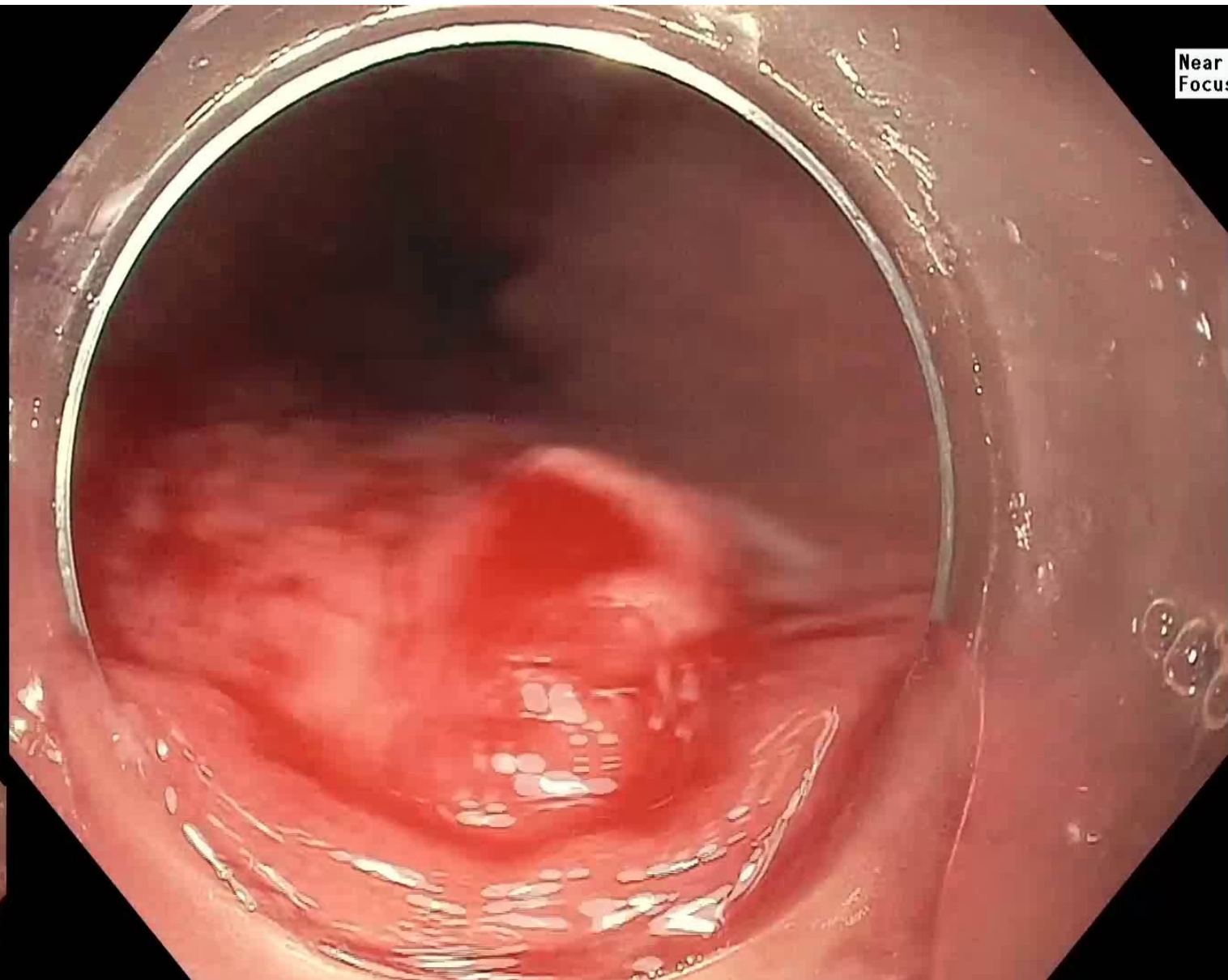
Interval 1

Duration 6



**HARVARD**  
MEDICAL SCHOOL





Near  
Focus

Scope:  
GIF HQ-190  
- Near focus  
- NBI  
Distal attachment Cap  
  
BSC captivator EMR kit  
  
Retrieval net  
  
ERBE Vio3  
  
Endocut Q

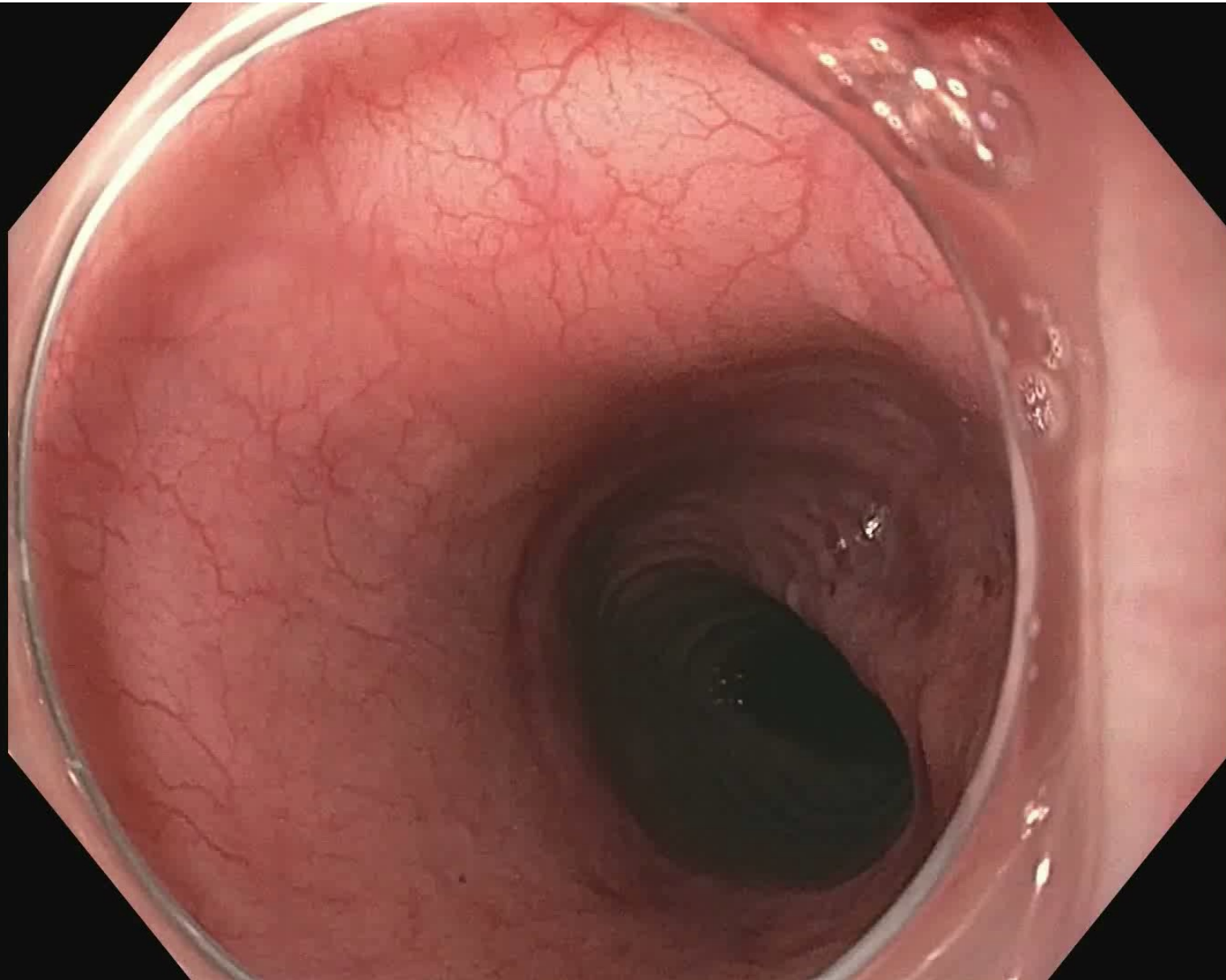
1. Mark the lesion for larger surface area dysplasia/IMC
2. Consider a touch of injection to see about lifting
3. You can always “test suction” to see if the lesion will enter the cap



**HARVARD**  
MEDICAL SCHOOL







Scope:  
GIF HQ-190  
- Near focus  
- NBI  
Distal attachment Cap

Olympus coagrasper

ERBE Vio3

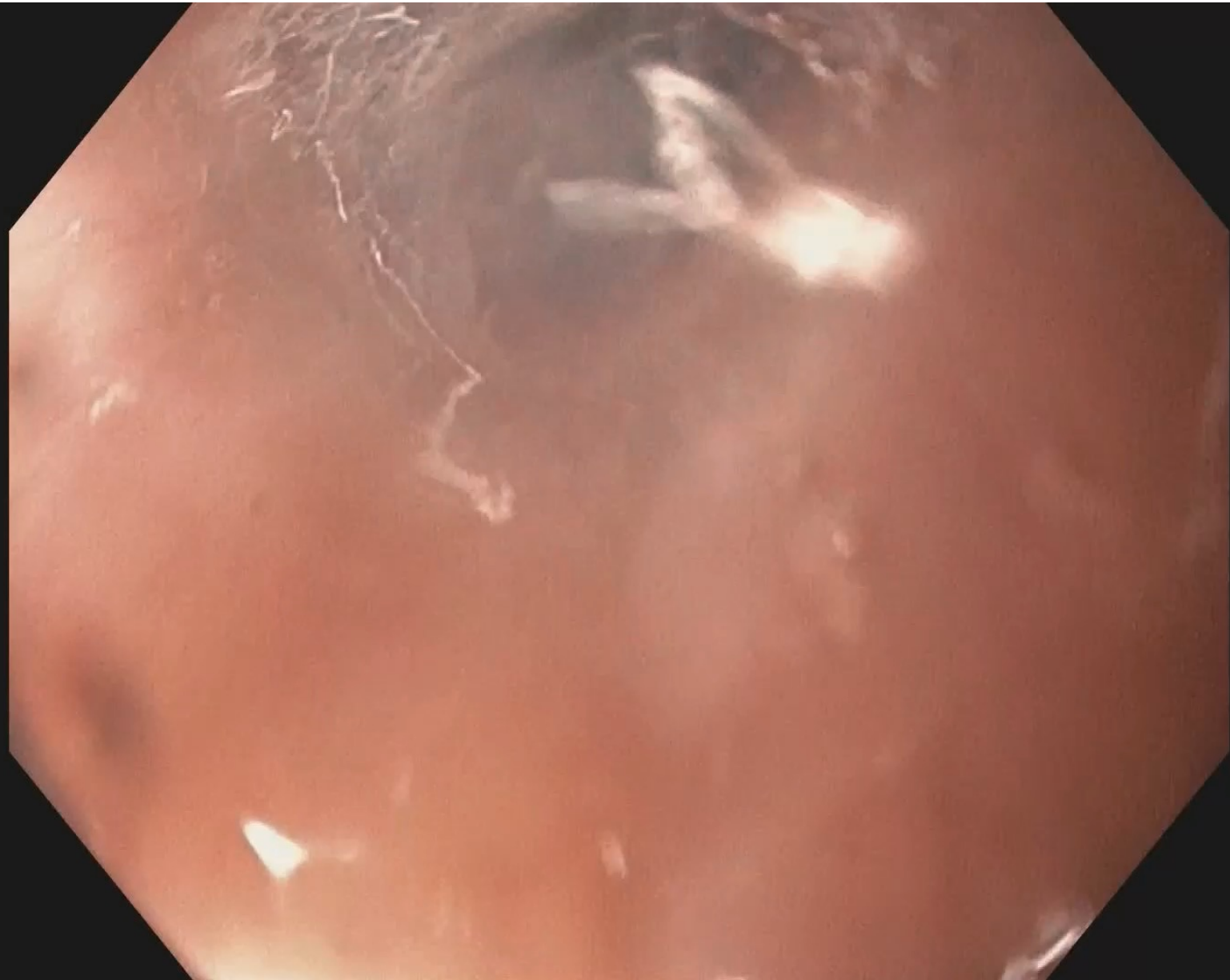
Soft coagulation  
Effect 5  
80 W

1. Coagraspers (80W soft coagulation effect 5)
2. Avoid clips. Don't close the defect
3. Be proactive and coagulate any visible vessels



**HARVARD**  
MEDICAL SCHOOL





Scope:  
GIF HQ-190  
- Near focus  
- NBI  
Distal attachment Cap  
BSC captivator EMR kit  
Retrieval net  
22g injection needle  
Eleview  
ERBE Vio3  
Endocut Q  
Effect 2  
Interval 1  
Duration 6

1. Consider injecting to hydrodissect before EMR
2. Care at the EGJ. Don't suck up the cardia
3. Expect fibrosis and take our time with suction

Esophageal EMR using band kit is a key component to the management of early esophageal neoplasia in Barrett's esophagus

If you can band varices, and can cut polyps, you can do EMR

Current data suggests that the vast majority of neoplastic lesions in the esophagus can be managed with band EMR. Only the deep margin is relevant

You must understand how to carefully assess these lesions for appropriate resection, margin, and advanced histology

EMR is substantially quicker, safer and equally effective as other endoscopic modalities for managing >95% of esophageal lesions

